

# LYVA LABS

# ANNUAL REPORT

## 2024 - 25

Innovation to commercialisation in  
Liverpool City Region



**LIVERPOOL  
CITY REGION**  
COMBINED AUTHORITY


**METROMAYOR**  
LIVERPOOL CITY REGION

We're very proud to showcase the work LYVA Labs has been doing over the past year.

Delivering economic growth through the commercialisation of innovation; inspiring ideas, creating partnerships and attracting investment.







## A hive of innovation, Liverpool City Region (LCR) has always been home to organisations powered by research and development to deliver scientific and technological firsts through inspirational partnerships.

Liverpool City Region aims to invest 5% of its GVA into research and development (R&D) by 2030; if realised this would deliver an estimated net additional £20B GVA, 44,000 jobs, and 10% productivity.

LYVA Labs was set up to support ambitions, building capacity and capability in innovation across the region, providing investment in key growth sectors and enabling collaborative innovation across the region to drive economic growth. We continue to support SMEs, start-ups, and mature businesses of many sizes to harness innovation and commercialise great ideas through investment and business support.

LYVA Labs connects entrepreneurs to regional resources, skills, and partnerships, helping them to scale up and become sustainable. We work with knowledge partners to identify new opportunities in our innovation ecosystem.

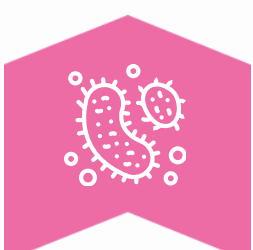
**Liverpool City Region aims to invest 5% of its GVA into research and development (R&D) by 2030**



**£1.15 million**  
Invested into 20  
H&LS and Deep-Tech  
companies



**3 national projects**  
delivered for  
Innovate UK and  
Research England



**15 research teams** in  
infectious disease  
supported with pitch  
and investment  
readiness on SIGHT



**+800 individuals**  
joined LYVA Labs' Advanced  
Manufacturing  
Innovation network



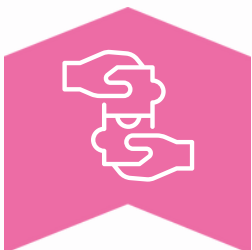
**8 companies**  
**relocated to LCR**  
as a consequence of  
our investment and  
support offering



**3 strategic  
ecosystem consortia**  
with industry, NHS,  
UKRI, and HEI in  
development



**10 collaborative  
innovation projects**  
for established LCR  
businesses with  
R&D partners



**2 new strategic  
partnerships**  
announced with CPI  
and Sci-Tech  
Daresbury/STFC



**Annual LCR  
Innovation Summit**  
now entering 4<sup>th</sup> year  
and expanded  
to a fortnight



## CEO's Report

**The past year has been transformational for LYVA Labs, and we have much to celebrate. We continue to support the creation of high growth, innovative businesses in the Liverpool City Region (LCR) through targeted investment and business support.**

During the year we invested over £1m, taking our portfolio to 20 SMEs in the health and life sciences and deep tech sectors. Our ecosystem work has led to the development of regional consortia linked to national networks, focused on research and innovation in microbiome and bioprocessing. Through our newly launched talent programme, we enabled a range of placements to benefit graduates and start-ups.

We also strengthened our partnership working with the University of Liverpool to host the national Microbiome Conference for the first time in Liverpool, and with the Liverpool School of Tropical Medicine on a Research England funded programme to increase their translational research and spin-out activities.

We ended the year with more good news, having secured a new 5-year contract, funded by the LCR Innovation Zone, to expand our business support activities and investment fund, and we entered into a new strategic partnership with Liverpool Health Partners and the Health Innovation Network NWC to develop an open innovation ecosystem for health.

LYVA Labs plays a vital role in building a more diverse and inclusive innovation ecosystem. Female founders and people from ethnic minorities combined, receive less than 5% of UK venture capital. Investment and grant funding for businesses based in Liverpool City Region falls well behind the Southeast and other cities in the North. By comparison >50% of our Challenge Fund invested to date has supported underrepresented founders, and LYVA Labs has one of the most diverse teams in the region, in terms of gender, age, and ethnicity. Over the coming year we will continue to work with Liverpool City Region Combined Authority and partners across the ecosystem to deliver our mission to increase investment in innovation across the region by:

- Providing tailored innovation consultancy
- Exploiting the wealth of innovation assets
- Identifying and securing appropriate funding and investment
- Inspiring collaboration across the ecosystem



# The year ahead

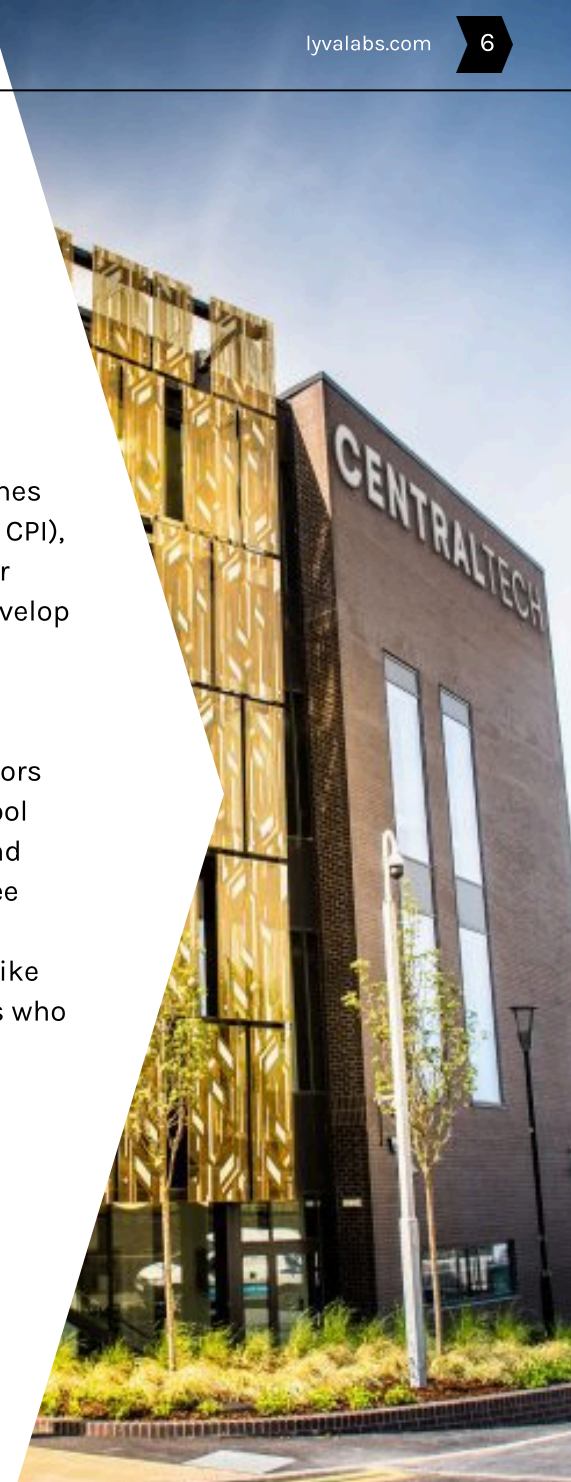
LYVA Labs' programmes and activities have evolved over the past three years, but **our core aim remains the same: to deliver economic growth through commercialisation of innovation; inspiring ideas, creating partnerships and attracting investment.** We do this by creating capacity and capability within LCR, not just within our own team but for our partners and the SMEs we work with.

As part of the Liverpool City Region Innovation Zone, **LYVA Labs will deliver new programmes tailored to founders' needs at different stages of their journey**, with access to a structured programme of support and access to industry experts and mentors.

We will establish a programme for academic entrepreneurs to support LSTM with delivery of BRITE, a 3-year initiative focused on developing a biologics cluster in our region, funded by Research England.

Autumn 2025 will see us partner with iiCON, the Microbiome Innovation Centre, the Future Medicines Institute and three national Catapult Centres (Medicines Discovery Catapult, Cell & Gene Therapy Catapult and CPI), to launch our second national Innovate UK Accelerator programme, supporting start-ups across the UK to develop medicines of the future, as part of their Biomedical Catalyst programme.

We would like to thank all our partners and collaborators who help deliver our programmes, our funders Liverpool City Region Combined Authority, Research England and Innovate UK, and our board and investment committee members who continue to support us with their knowledge, experience, and expertise. We would also like to recognise the amazing founders and entrepreneurs who inspire us, challenge us and encourage us to keep building.





# Innovation Zone: IGAP

In March 2025 **Liverpool City Region Combined Authority** approved **£4.24 million of Innovation Zone funding to LYVA Labs** for a new 5-year business support programme - Innovate, Grow, Accelerate and Partner (IGAP).

In addition to delivering our **Incubator** programme for 40 start-ups, IGAP will see LYVA Labs launch a unique annual programme, Catalyst, designed to support 50 early-stage health and life science, clean tech and deep tech businesses as they progress from their validated concepts to live pilots or products.

**Catalyst** will focus on helping companies commercialise their minimum viable products (MVPs), accelerate market traction, and position themselves for further investment.

The programmes include:

- Expert Diagnostics: in-depth assessments with start-up or scale-up experts to identify gaps and opportunities in product roadmaps and commercial strategy.
- Technical Support: specialist regulatory roadmap advice, critical for accelerating adoption in health and life sciences sectors.
- Commercial Expertise and Talent: introductions to experienced business leaders and advisors who can support scale-up, fundraising, and market entry



## £1M Clean Tech for Health Capital Fund

As part of IGAP, LYVA Labs will manage a new £1 million Clean Tech for Health Capital Fund.

This dedicated pre-seed investment fund will back +10 early-stage businesses developing innovative clean technologies that improve public health and drive sustainability in healthcare.

The Fund will target solutions tackling challenges such as air quality, respiratory health, and greener healthcare delivery, while also helping founders access vital early-stage finance and investor networks.



**LIVERPOOL  
CITY REGION**  
COMBINED AUTHORITY

**METROMAYOR**  
LIVERPOOL CITY REGION

## LYVA Labs works with companies at every stage of the innovation journey:

From start-up to ambitious high growth enterprises through to collaboration with multi-nationals, by nurturing innovation to drive economic growth, we will create **higher-value jobs in key growth sectors**. Developing skills and talent in the region to deliver a **better quality of life for people living here**.





## A few words from our Chair, Steve Stuart

As LYVA Labs approaches its fourth year, our impact on the Liverpool City Region's innovation ecosystem continues to grow. We have formed new collaborations, extended our reach, and backed ambitious innovators shaping the region's future.

Over the past year, I have seen first-hand how our investment in early-stage innovation is making a real difference. We expanded our Deep Tech Incubator into Health & Life Sciences and have built new R&D partnerships, helping more breakthrough technologies take root and flourish here in the Liverpool City Region. At the same time, we are strengthening collaboration with investors, universities, industry, and the public sector to drive inclusive growth.

I am especially proud of how the LYVA Labs team has stepped up to every challenge. It is inspiring to see how a small group of dedicated professionals can deliver such meaningful impact – not only within LYVA Labs, but across the wider ecosystem of innovators, entrepreneurs, and future leaders. Liverpool City Region is fast becoming a hub for health and life sciences, deep tech, and clean tech. LYVA Labs is proud to play a part in this transformation, supporting innovation, talent, and long-term economic growth.

Looking ahead, for us to sustain this impact and ensure we can back even more ambitious innovators, we must now turn our attention to raising further investment capital. Building this follow on fund will allow LYVA Labs to continue driving growth and support the next wave of transformative companies in our region.

I am confident that our work will continue to unlock new opportunities, build a stronger innovation ecosystem, and help shape a prosperous future for Liverpool City Region.



# Liverpool City Region Mayor, Steve Rotheram

**LYVA Labs launched in 2021, with £10.5m funding from Liverpool City Region Combined Authority.**



“LYVA Labs has been an outstanding success story for the Liverpool City Region. It’s demonstrated exactly how targeted investment can drive innovation, create high-quality jobs, and foster the next generation of ground-breaking businesses.

It’s clear that LYVA Labs is not just supporting start-ups, but transforming the region’s economy by nurturing talent, creating new opportunities, and attracting significant investment.

This is just the beginning, and I’m incredibly proud of the work that team are doing to put the Liverpool City Region at the forefront of innovation.”







# Consultancy, funding, and connections fuelling success

LYVA Labs consultancy services, including our R&D innovation grants, deliver bespoke support to businesses or organisations helping them take early innovative ideas into viable commercial projects through introductions to expert partners and getting them ready for follow-on funding.





Joe Cooke,  
LYVA Labs Client Delivery Manager

**“According to the ScaleUp Institute’s latest 2024 Annual Report, 9 in 10 scaleups have introduced or improved a product/service/process in the last three years, twice the rate of large firms, and they are significant adopters of new technologies.**

**Evidence shows that innovation and R&D investment pays off, allowing companies to create new growth engines in their business to scale, thereby unlocking impactful new knowledge economy jobs and investment opportunities for our region.”**

LYVA Labs consultancy services, and funding help prioritise and kick-start R&D projects with local SMEs and larger organisations, achieving some early proof of concept milestones that can unlock further funding and resources, as well as forging new partnerships with expert partners.

This year the LYVA Labs team has supported several exciting and interesting projects from a range of sectors, including:

- new digital and AI solutions for the education sector with Chatty Learning and Modulo Studios
- health sector innovations with ICE Creates and Clatterbridge Cancer Centre
- disruptive circular business models with Uplyfted and FRC Group
- advanced engineering ventures with GT Wings and Thinkittech

All have benefited from support in building on their ideas, developing a commercial roadmap, and being connected with expert partners to help progress their R&D journey.

These projects have helped develop new partnerships with specialist technology firms such as A20 Manufacturing and Hooper Quinn, and secured follow-on funding opportunities, such as the project collaboration between Clatterbridge Cancer Centre NHS Trust, Blum Health (an LCR-based digital health developer), and pharmaceuticals giant, Pfizer.



“At Clatterbridge, we’ve developed an open innovation approach that makes it easier for SMEs to collaborate with us. Our partnership with Blüm and LYVA Labs is a great example. LYVA Labs believed in the idea from the start and played a key role in shaping it. Their commercial insight and strategic input helped us build a strong business model and value proposition.

They continued to support us through the early stages, challenging our thinking and helping us build a compelling case for investment. With funding from LYVA Labs and Pfizer, and support from Blüm, we were able to move quickly and test in real-world settings - always focused on improving care for the people we serve.”

**Simon Bunting**, Innovation Manager, The Clatterbridge Cancer Centre NHS Foundation Trust

In June 2024, LYVA Labs began working with the innovation team at The Clatterbridge Cancer Centre NHS Trust, providing consultancy support to prioritise innovation opportunities they had identified.

Through our “Develop” consultancy workshop and follow-on support, we helped shape their early-stage ideas, define user and customer personas, business models, and plan future development with an external partner.

The most promising opportunity to emerge was **SYMBOT**—an AI-enabled voice-bot and data collection platform designed to improve the capture of **Patient Reported Outcome Measures (PROMs)** from individuals undergoing cancer drug treatment. Traditionally, PROMs are gathered through clinic visits or phone calls, which can be time-consuming and inconsistent. SYMBOT aims to transform this process.

The first release, due in Autumn 2025, will focus on patient engagement and accessibility, with a voice-first interface that allows SYMBOT to call patients at clinician-defined intervals. It will collect symptom data through a structured, friendly conversation, then transcribe, analyse, and grade the information.

To kickstart the project, LYVA Labs awarded a total **£16,200 in grant funding** through our R&D Partnership Fund, alongside a £15,000 investment from The Clatterbridge Cancer Centre NHS Trust. The development is being led by **Blüm Health**, a Merseyside-based digital health company with deep expertise in NHS-ready software, generative AI, and machine learning. LYVA Labs have also supported the Clatterbridge team in developing a collaborative working project with **Pfizer**, securing **£165,000 in follow-on funding** to realise the full development roadmap of the pilot.





**Martin Harrop** – Product Director, GT Wings.

**“LYVA Labs support with introductions to the advanced manufacturing and maritime sector in Liverpool City Region, alongside the R&D grant funding utilised in our design for manufacturing activities has been a really helpful partnership on the journey to our first successful sea trials.”**

In 2025, **GT Wings** successfully manufactured their first pilot wing and conducted transatlantic sea trials in collaboration with Carisbrooke Shipping - already delivering fuel savings and carbon emission reductions for the test vessel.

LYVA Labs has been supportive of GT Wings getting to this stage in a number of ways - including helping to establish a strategic development and manufacturing partnership with Liverpool City Region-based **A20 Manufacturing Ltd.**

LYVA Labs £15K R&D partner grant was used with match-funding from GT Wings to help kick start that relationship and begin design for manufacturing assessments ahead of the full manufacturing process of the pilot wing, completed in March 2025.

We look forward to seeing the continued progress of this novel technology, and the collaborations we can help foster with the LCR maritime sector.





## Investing in innovation and grant support

LYVA Labs has so far made £1.15m pre-seed investment into 20 health and life sciences and deep tech start-ups. Our investment into these early-stage companies has enabled them to leverage an additional £3.64m in co-investment and secure a further £4.99m in grant funding.

It's our close integration with local and national investment and innovation ecosystems, and our prioritisation towards high growth sectors, translatable research, and disruptive technologies, that help us give our portfolio companies the best chance of success.



In January 2025, LYVA Labs invested £125,000 into **Atomik AM**, a University of Liverpool spinout, through the Pre-Seed Challenge Fund.

Atomik AM has developed advanced techniques and binders to improve the binder jetting process, a key area in additive manufacturing.

The investment is enabling Atomik AM to accelerate product commercialisation by converting a strong pipeline of opportunities into commercial contracts. It also supports the development of new intellectual property, including the filing of a new patent, the retention of eight jobs, and the creation of a new Chief Operating Officer role.

Founder and CEO Professor Kate Black successfully exited Meta Additive Ltd, a company which she founded, in June 2022.

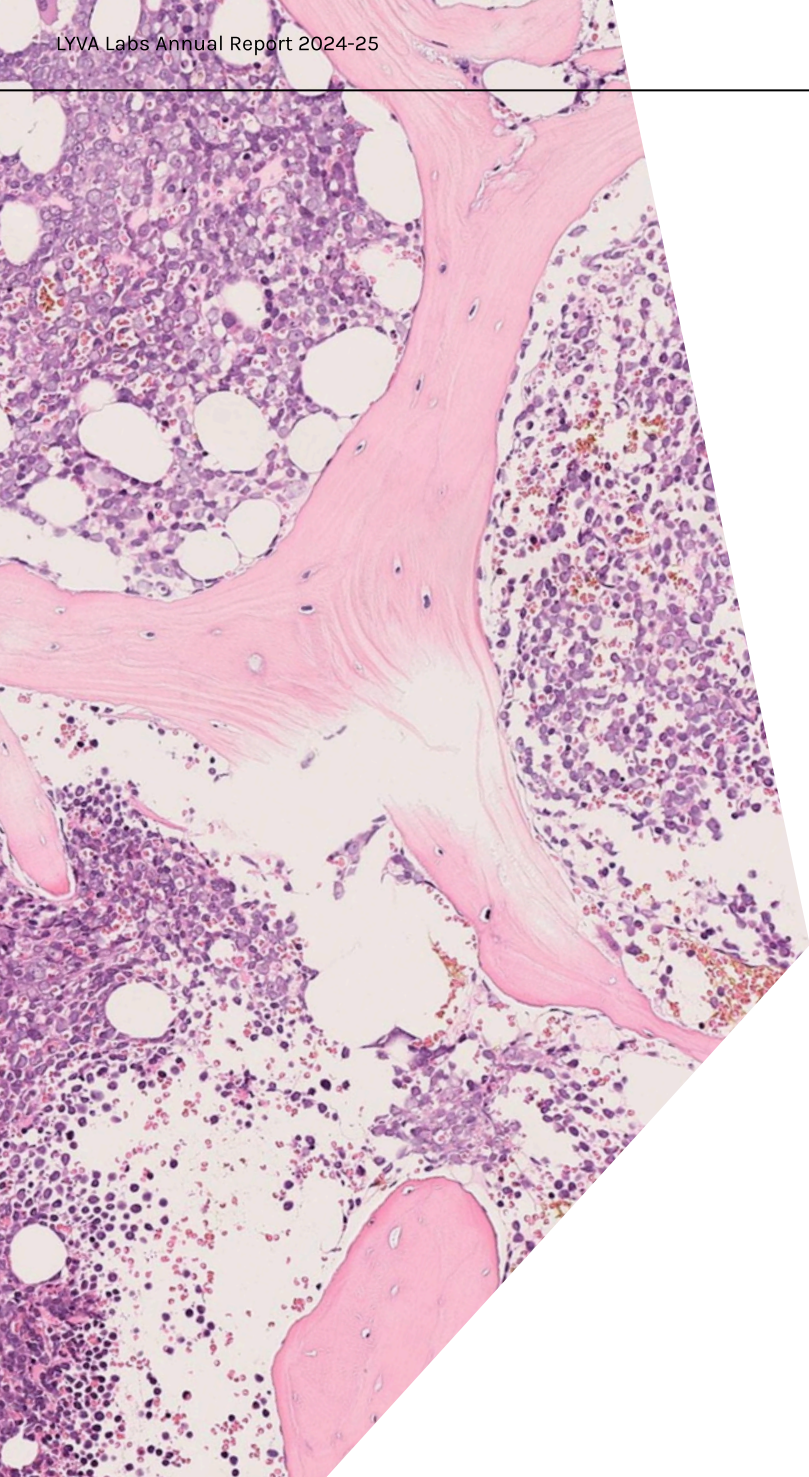


Founder and CEO Professor **Kate Black**

**“This investment is a testament to the groundbreaking work our team is doing to advance additive manufacturing processes. It allows us to expand our capabilities, accelerate innovation, and bring sustainable, cutting-edge solutions to the industry. At Atomik AM, we believe in driving change in manufacturing to create a better future for everyone.”**

Explore Our  
Investments  
Here





In July 2024, LYVA Labs invested £125,000 into **Spotlight Pathology**. Spotlight, a spinout from the University of Manchester, is developing AI tools to support pathologists in diagnosing complex blood cancers. Research shows there is a significant global shortage of specialists that contributes to delays in diagnosis, treatment, and patient outcomes.

The investment, talent and support available prompted Spotlight to relocate to Sci-Tech Daresbury, securing its place in the Liverpool City Region. We also helped Spotlight complete a £0.9 million Innovate UK grant allowing them to build a significant bank of blood tissue samples.



**Dr Sam Perona** was appointed as CEO in April 2024, following her successful exit from Perfectus Biomed.

**“We were delighted to receive this investment from LYVA Labs. The process was rapid and straightforward, allowing us to focus on growing the business. This investment has supported team expansion and accelerated our go-to-market strategy.”**

# Incubator Programme

LYVA Labs Incubator is a five-month business support programme for early-stage businesses across the Liverpool City Region, with a focus on deep tech, health & life sciences, and clean tech for health.

To date, the programme has supported 18 start-ups and spinouts with tailored investment and business development support. This includes up to £25k investment on day one, one-to-one mentoring in grant writing, business planning and pitching, access to resources and expertise through our talent programme and mentor network, cohort learning sessions, and an investor demo day.

Graduates of the programme leave with a clear route to market. Many have gone on to secure competitive grant funding and attract follow-on venture capital investment – with up to £250,000 in matched funding available at the discretion of our investment committee. Our most recent cohort of seven companies has collectively already raised £1.24 million in follow-on investment, with more funding expected.



"I entered this programme as a physiotherapist with an idea and some early testing. I now feel that I have a business and a plan on how to do this a successful business with clear steps forward. The support and local connections are fantastic."

Nicki Allen  
Founder - Haptiv8



"LYVA Labs Incubator programme was a very positive overall experience for Gigmate. We've been on a few programmes over the last 18 months, and I can genuinely say that LYVA Labs has been the most supportive and valuable. We have progressed the business so much in the last 6 months and it wouldn't have been possible without Team LYVA".

Rob March  
Founder - Gigmate

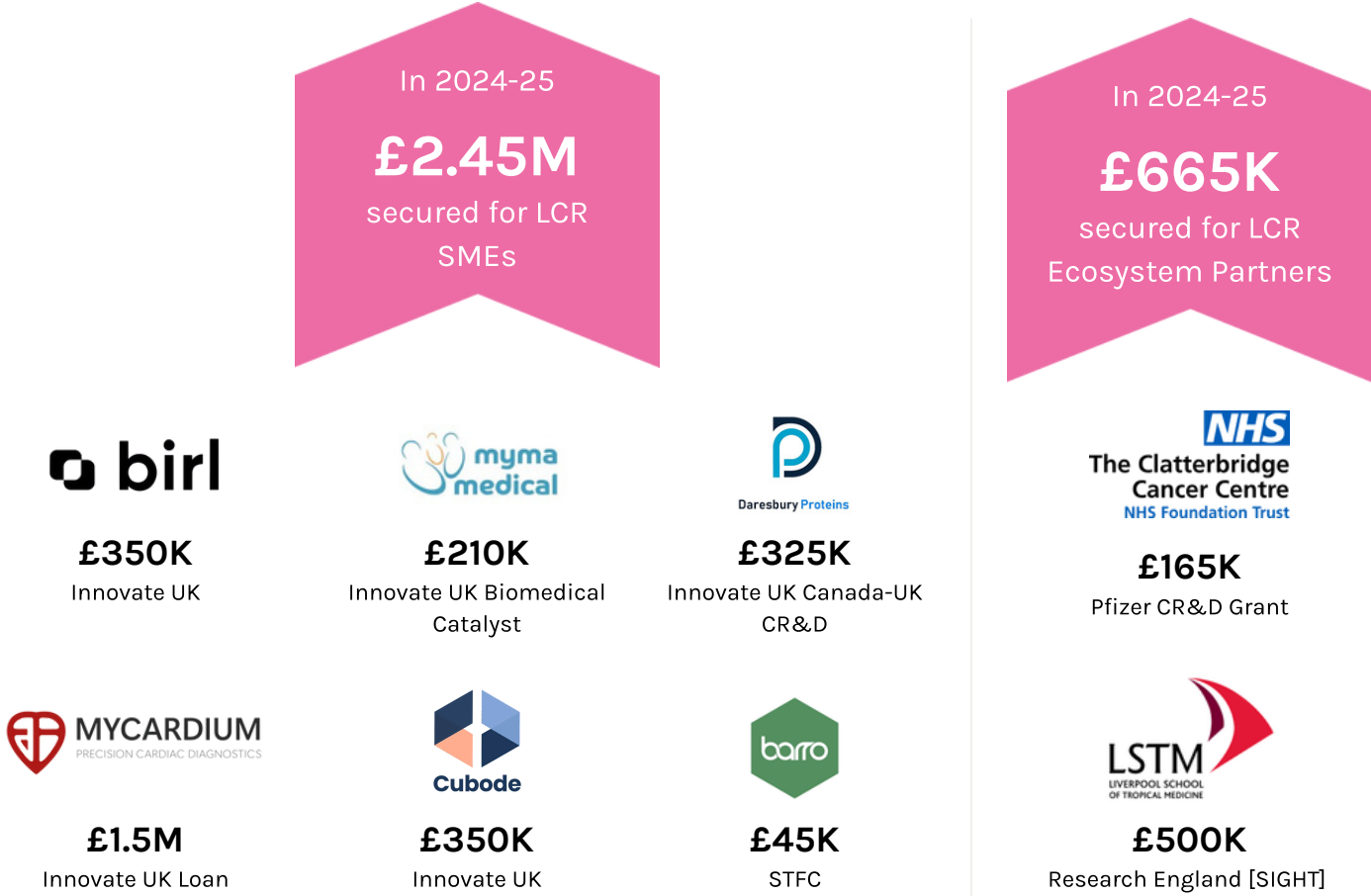




# Grant Support

Supporting LCR companies and institutions with grant funding support has continued to be a core part of LYVA Labs offer. In an increasingly competitive funding landscape, we're really proud of impact we've had in helping innovators and ecosystem partners to secure funds that support their development and continue to strengthen the region's capabilities.

Here's a snapshot of what's been achieved during the past year:





# Our region is recognised for world-leading research and innovation in health and life sciences, materials and AI.

A number of open innovation platforms and facilities have coalesced around distinctive assets in these sectors, attracting private and public investment and generated significant economic impact.

LYVA labs places itself at the heart of these opportunities, learning from successes, identifying strengths and gaps, building partnerships, and developing new business cases. The targeted aim is lasting and impactful consortia which will grow the region's knowledge economy, assets, and capabilities, to stimulate greater innovation activity for the benefit of society.







## Building partnerships across microbiome, engineering biology and health innovation, LYVA Labs is shaping national conversations on place-based investment.

In the past year, we significantly deepened our collaborations with industry and knowledge partners to execute large scale proposals to grow consortia and clusters in microbiome, engineering biology, and health innovation.

We have conducted detailed, intelligence-driven mapping, research and consultation to develop a comprehensive landscape of regional assets, capabilities, and infrastructure. Co-creating engagement with key stakeholders, through a series of roundtables and workshops, enabled us to build up momentum and enhanced social capital within the innovation ecosystems. We have seized upon high profile, local, and national innovation and R&D engagement opportunities to influence policy makers and funders, showcasing the potential for place-based investment in these areas.

**"LYVA Labs has played a vital role in delivering the shared goal of bringing together engineering biology stakeholders from biomanufacturing and chemicals sectors so we can have joined-up conversations about pressing challenges such as infrastructure gaps.**

**I've welcomed the opportunity to work closely with them as we embrace the opportunities from the Industrial Strategy, to make UK globally competitive in this technology and sustain and build critical manufacturing capability in the region."**



**Dr Damian Kelly**

Vice President Innovation & Technology Development, Croda



Building on the formation of the **Microbiome Strategic Advisory Group**, LYVA Labs has broadened stakeholder engagement to explore and activate the potential for a microbiome cluster in Liverpool City Region (LCR).

Through UKRI funding via iiCON, we have scoped barriers to translating and commercialising microbiome research, focusing on known challenges around manufacturing, data, regulation, and bio-resourcing. This included detailed consultation with over 50 stakeholders across academia, industry, clinical practice, regulation, and funding bodies, supported by a dedicated data science review delivered by expert bioinformaticians.

LCR has a nationally significant base of microbiome research, translational and commercialisation expertise and capabilities, with the University of Liverpool’s Microbiome Innovation Centre, Computational Biology Facility, and Liv-Shared Services; complemented by strengths in infection control and antimicrobial resistance at LSTM and iiCON, and high-performance computing via STFC Hartree and IBM. Industry anchors such as Unilever, Croda, and Lubrizol are significant ecosystem contributors.

The region’s microbiome innovation potential is also enhanced by key projects such as the CGULL longitudinal cohort study and Innovation Zone-funded initiatives including the Microbiome Infectious Diseases Hub (MaID) and LYVA Labs’ Accelerator, aimed at fostering the next generation of microbiome innovators.





LYVA Labs will co-create a set of recommendations with the ecosystem in Summer 2025, aligned with regional priorities to secure investment and strengthening LCR's competitive advantage in this growing sector.

Engineering Biology is identified as a national strategic technology and presents a major opportunity for LCR, home to one of Europe's largest biomanufacturing clusters. Global firms including AstraZeneca, Unilever, Croda, Elanco, and SMEs such as Holiferm operate in the region, with the Elanco site representing critical national fermentation infrastructure.

LYVA Labs conducted extensive consultation with 66 stakeholders, alongside workshops with industry leaders, identifying access to fermentation scale-up as a key UK-wide gap. This was reinforced through consultation at national stakeholder fora with some of the industry's biggest players.

**“LYVA Labs’ purpose is to offer outcome-driven innovation capacity to develop consortia, and we will continue to work with stakeholders to leverage investment, expand infrastructure, and help position LCR—and the UK—as a global leader in engineering biology.”**



**Farhad Ahmed**

Head of Strategic Partnerships



**LYVA Labs worked directly with 10 academic teams to develop tailored business cases**

## SIGHT Programme

**LYVA Labs played a key role in delivering the Sustainable Innovation in Global Health Technology (SIGHT) programme, an ambitious initiative aimed at transforming how global health research is commercialised in the UK.**

SIGHT brought together the infectious disease and public health expertise of three leading specialist higher education providers: **Liverpool School of Tropical Medicine (LSTM)**, **London School of Hygiene & Tropical Medicine**, and **Brighton and Sussex Medical School** supported by **Oxentia**, **iiCON**, and **LYVA Labs**.

SIGHT, funded by **Research England's Connecting Capability Fund**, responded to the challenge of traditional technology transfer models often falling short in translating global health research into sustainable, impactful interventions. The programme sought to pilot a shared technology transfer and venture-building model, designed to unlock the commercial and public health value of their combined research portfolios.

As part of this initiative, LYVA Labs was commissioned by LSTM to design and deliver an investment readiness programme for academic founders. LYVA Labs worked directly with 10 academic teams to develop tailored business cases, helping them refine their commercial strategies and prepare for early-stage investor engagement. This support was complemented by a two-day Investor Readiness Bootcamp held in Liverpool, which brought together +15 academic entrepreneurs from across the partner institutions. The bootcamp included practical workshops on investment fundamentals, investor expectations, and pitch development, ending with a live pitching session with feedback from investors, mentors, and venture experts.

Through the SIGHT programme, LYVA Labs has helped lay the groundwork for a new, collaborative model of technology commercialisation in global health—one that is more inclusive, scalable, and aligned with both public health priorities and market realities.



## Wider Activity

A taste of what else the LYVA Labs team got up to during 2024/25:

Supporting regional talent, giving back to our communities, investing in local businesses, showcasing our regional strengths, learning from others and developing our own team, collaborating with those that share our ambition.





# Talent Programme

In February 2024, LYVA Labs officially launched its Talent Programme. With just 40% of local graduates remaining in the Liverpool City Region after completing their studies, LYVA Labs set out to create more opportunities for talent here in LCR.

Driven entirely by our commitment to developing the region's future workforce, the programme is built around three key pillars:

- **Talent Programme Mapping:** LYVA Labs has identified and mapped talent initiatives available across the region's Higher Education Institutions (HEIs), helping businesses within its network connect to the wide range of existing talent opportunities.
- **Talent Academy:** We have offered students and graduates hands-on experience through direct opportunities alongside the LYVA Labs team.
- **Inspiring Events:** By hosting and attending talent-focused events across the region, LYVA Labs is helping to raise awareness of careers in innovation, entrepreneurship, and investment - supporting students in discovering new and ambitious career pathways.



# A pipeline of talent for clients

Since launching, LYVA Labs’ Talent Programme has supported the creation of 20 meaningful opportunities, spanning both internal positions at LYVA Labs and external roles between local businesses and HEIs.

Internships have included diverse roles such as Assistant Innovation Partner, Events Assistant, Cloud Computing Analyst, Business Development Intern, Video Production and Social Media Intern, and Research Assistants. MBA consultancy projects have tackled a wide range of topics, including commercial route to market, marketing and business strategy, market analysis, and digital growth planning. Additionally, LYVA Labs connected a local business to Digital Production T-Level students who are developing a bespoke app as part of their industry placement.



**“Working with the MBA consultancy group through LYVA Labs’ Talent Programme was a brilliant experience. The MBA students brought fresh insight, strategic thinking, and a genuine belief in our mission. Their final recommendations have given us a solid foundation for our next stage of growth.”**  
**Nicki Allen, Founder, Haptiv8**

As the programme continues to grow, LYVA Labs remains committed to embedding talent development across all aspects of its work - helping to shape a more connected, inclusive and opportunity-rich ecosystem in LCR where more graduates choose to stay and thrive.





# A taste of LYVA Labs activities throughout the year



- > MoU signed with CPI
- > Northern Powerhouse Investment Fund II (NPIF2)
- > Lifted project launch: regional board for High Growth Female Founders chaired by Lorna Green
- > Industrial Biotechnology Innovation Catalyst (IBIC) launch

- > Climb 24, Leeds
- > BioSeed Summer, London
- > Health Innovation North Conference - presentation to NHS Clinical Entrepreneurs

- > Innovate UK CEO and LCR Mayor visit LYVA Labs' client Heap & Partners
- > £125k investment in Entropix
- > £125K investment into Spotlight Pathology
- > Demo Day for pilot Deep Tech Incubator

## April

- > Innovate UK Investor Partnerships & Innovation Loans Workshop, London



## May

- > **LCR Innovation Week**
- > Investment pitch day
- > STFC's NW Health Cluster Anniversary Conference
- > FUEL Liverpool
- > MIF 'From Atoms to Materials with Digital Tools' event

## June

- > LCR Talking Business
- > Innovate UK Regional Investment spotlight
- > Heatio secures £2M Seed investment

## July

- > £857,000 funding secured by IUK Biomedical Catalyst Microbials Accelerator cohort
- > LCR Professional Business Services Report launch
- > STFC Advanced Materials report launch
- > KQ Liverpool Career Insights Event



- > Launch of LYVA Labs 2<sup>nd</sup> Incubator programme

- > Labour Party Conference, Liverpool. Scale Up panel.
- > Harnessing Startups and Scale Ups for Growth & Productivity: hosted by Startup Coalition and techUK.

- > SIGHT spin-out commercialisation programme commences
- > LHP Health Innovation Ecosystem event and panel
- > £305K of new pre-seed investments made



- > LYVA Labs signs new partnership with Sci-Tech Daresbury and Science and Technology Facilities Council

## August

- > Joint visit with iiCON to The National Robotarium, Edinburgh

## September

- > National One Health Microbiome Conference, Liverpool - panel chair
- > LYVA Labs invests £50,000 in Wirral-based, PelliTec

## October

- > LYVA Labs Innovation in Advanced Materials 2D - 3D event, Knowsley



## November

- > LYVA Labs to lead open innovation network for commercialising microbiome research
- > In The Know - KQ Liverpool - Innovate with AI





- > Connected Places Catapult - Maritime Innovation workshop
- > University of Liverpool Entrepreneurs event

- > Innovate UK Scaling Portfolio Event, The Spine, panel member
- > Innovate UK iCURE options roundabout



- > Innovate UK BMC Showcase London
- > BioInfect Conference

- > Fair Employment Charter
- > BBN Investor showcase and panel
- > LYVA Labs secures £4.24m funding for 5-year IGAP business support programme

## December

- > Health Innovation NWC Innovation - collaboration event
- > LYVA Labs celebrates third birthday with visit from Mayor, Steve Rotheram



## January

- > Atomik AM investment £125k

## February

- > LCR Funding Masterclass with IUK
- > CCI investment £100k

## March

- > Innovate UK iCURE 10th Anniversary. Manchester
- > Bionow Awards: shortlisted for Business Services Award
- > AdMan Launchpad event with Mersey Maritime
- > Glow Green sponsored walk for Clatterbridge



**We're not standing still at  
LYVA Labs. Our plans  
remain ambitious, and our  
journey exciting.**

**Learn more at:  
[www.lyvalabs.com](http://www.lyvalabs.com)**

**LYVA  
LABS**



The LYVA LABS logo is a white, stylized 'L' shape on a black background. The text 'LYVA' is in a bold, sans-serif font, and 'LABS' is in a regular, sans-serif font, both in black.

**LYVA**  
LABS

**lyvalabs.com**

Keep up to date with LYVA Labs by  
subscribing to our newsletter

[enquiries@lyvalabs.com](mailto:enquiries@lyvalabs.com)

CENTRAL TECH, 31 Russell St,  
Liverpool, L3 5LJ

